



Hydro Tasmania
the renewable energy business

Position Description:

Role title, Grade, level	Senior Civil Engineer, Band 4 / 5
Level of Work (I, II, III, IV...)	I
Incumbent	NA
Department/Line of Business	Consulting, Water & Environment Group
Immediate Manager	Fraser White (Manager Civil)
Direct reports	Nil
Manager-one-removed	Group Manager (Tammy Chu)
Role purpose	<p>The Professional is responsible for contributing to the day to day delivery of engagements for clients as well as undertaking other specific business performance and improvement roles as required.</p> <p>The Professional provides <i>structural design and civil engineering</i> skills within the relevant technical discipline for effective delivery of Hydro Tasmania Consulting (HTC) projects within the <i>W&E</i> Group.</p>
Organisation requirements	<p>All positions within Hydro Tasmania will support the achievement of our vision. Dealing successfully with our colleagues, customers and the community requires all employees to act in accordance with the company's stated values.</p> <p>You are required to comply with all relevant legislation, laws, regulations, standards, codes and Hydro Tasmania policies and procedures.</p> <p>While at work you must take reasonable care of your own health and safety and the health and safety of other people, including people working under your supervision or direction who may be affected by your acts or omissions at the workplace in accordance with current Tasmanian Workplace Health and Safety Legislation.</p>
Role Accountabilities	(feeds into KRAs in PDR process)
People accountabilities	



1. Ensure personal effectiveness in role, including:

- Assume responsibility for quality, value and timeliness of all work undertaken;
- Contributing to personal Performance Plan objectives;
- Taking ownership and responsibility for own work priorities and for contributing to team objectives;
- Maintain technical knowledge and expertise in the respective field/s and keep abreast of technical best practice and relevant new technologies;
- Undertaking appropriate professional development opportunities; and
- Ensure the incorporation of continuous improvement into any work undertaken.

2. Demonstrate alignment with Hydro Tasmania's values and policies, including:

- Use of values-based decision making.
- Demonstrate a well developed understanding of the importance of bottom line (People, Planet, Profit) results;
- Ensure compliance with all Hydro Tasmania policies and procedures as well as all aspects and/or requirements of the Workplace Health and Safety Act;
- Actively promote a safe working environment; and
- Maintain confidentiality of all Hydro Tasmania data and technical information; in accordance with Hydro Tasmania policies and procedures and intellectual property project contract provisions.

Technical accountabilities

3. To assist engineers and to provide professional structural and civil engineering advice to internal and external clients,

including:

- Reinforced concrete design
- Structural Steel Design
- Dam design
- Dam safety
- Hydraulic analysis
- Numerical Modelling
- Space frame analysis
- Geotechnical Engineering
- Hydropower feasibility studies
- Infrastructure risk assessment

4. Communication skills,

including:

- Strong written and verbal skills
- Ability to gather and receive information and assimilate ideas
- Convey information to others in a clear, concise manner
- Using appropriate methods of networking and sharing to gain cooperation, assistance and information from others

5. Analysis/Problem Solving,

including:

- Analyse the cause of problems in a logical manner;
 - Produce logical solutions to problems, productively and prevent problems from occurring;
 - Learn from past mistakes and think ahead; and
-

- o Ability to gather and receive information and assimilate ideas.

Scheduling accountabilities

6. Prioritise and manage own workload,

including:

- o Organise work and time allocation to always achieve / exceed Client expectations;
- o Work in an organised methodical manner;
- o Set and meets own work objectives; and
- o The need to work under pressure to meet changes in programs and scope of work to satisfy the demands of clients.

7. Developing and managing against strategic and business plans,

including:

- o Participating in the planning process;
- o Monitoring progress against plan; and
- o Taking corrective actions as required.

8. Maintains a safe working environment,

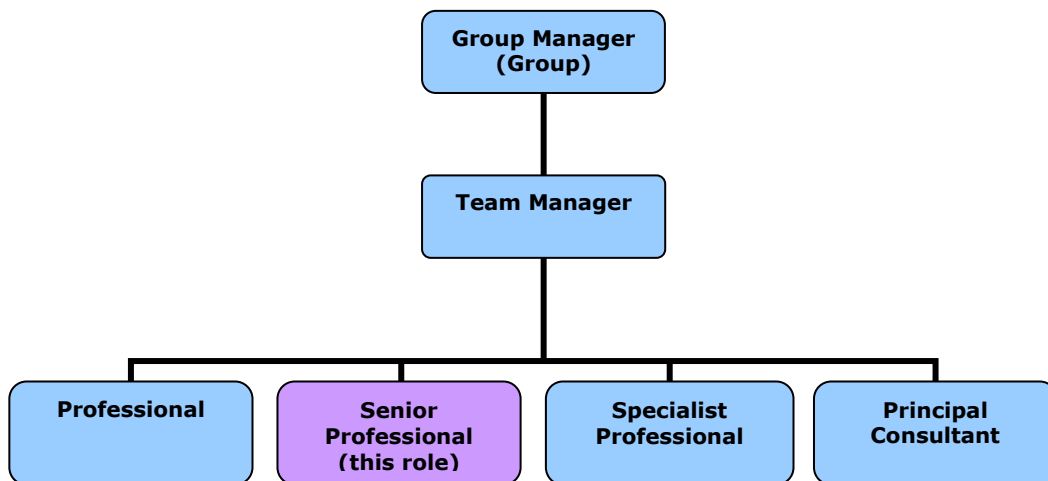
including:

- o Ensures that the workplace meets safety requirements set down in legislation, standards and in the organisation’s policies and practices;
- o **Promotes and monitors a safe workplace environment**

Delegations

- Per Hydro Tasmania Delegations Manual for Level Of Work (LOW)

Organisational Chart



Role relationships - (critical to the effectiveness of the role, high impact on role)

Internal

- Delivery Managers

External

- Clients and their project managers

-
- Project Directors, Project & Job Managers
 - Managing Consultants
 - Team Managers and team members
 - Internal clientele
 - Government bodies and instrumentalities, consultants and international experts
 - Various equipment supplier representatives
 - Sub-contracted parties
-

Selection Criteria

Essential

Qualifications

- Tertiary qualifications in Civil Engineering or a related discipline as required for admission as a member of Engineers Australia, or another appropriate professional body.

Experience

- In civil design, in particular;
 - Reinforced concrete design
 - Structural steel design
 - Foundation design
 - Civil investigations for moderate to large structures
 - Infrastructure Risk assessments
 - Numerical Modelling
 - Space Frame Analysis

Knowledge, skills and abilities

- Professional knowledge structural and civil design
- Proficient in the preparation of consultancy proposals and reports
- High level computer skills, particularly in Microsoft software Word, Excel, Project and PowerPoint, as well as FEA and Space Frame modelling and Geotechnical analysis.
- Proven ability to plan, schedule and manage work commitments and conflicting priorities to achieve business requirements
- A high standard of interpersonal skills
- Knows and understands the business
- Maintains confidentiality of all Hydro Tasmania data and technical information

Desirable

Qualifications

- Postgraduate qualifications in Civil / Structural / Geotechnical Engineering

Experience

- Dam design
- Hydropower feasibility and design studies
- Geotechnical analysis
- Construction supervision
- Overseas experience
- Hydraulic analysis (pipes, channels, flumes, spillways)
- Dam design
- CADD design

Knowledge, skills and abilities

- Project Management
 - Demonstrated ability to negotiate effectively with external and internal clients and service providers
-