



# Role Description:

<b>Role title, Grade, level</b>	Senior Engineer - Structural, Band 4
<b>Incumbent</b>	Vacant
<b>Department/Line of Business</b>	Energy and Power Group, Consulting Business
<b>Immediate manager</b>	Team Manager
<b>Direct reports</b>	Nil
<b>Manager-one-removed</b>	Group Manager
<b>Role purpose</b>	<p>Provide engineering design skills within the relevant technical discipline associated with the installation of new substation and transmission line structures and their foundations.</p> <p>This work may be associated with initial construction and installation, enhancement or refurbishment, and may be conducted in a project or job management capacity.</p>

## Organisation requirements



All positions within Hydro Tasmania will support the achievement of our vision. Dealing successfully with our colleagues, customers and the community requires all employees to act in accordance with the company's stated values.

You are required to comply with all relevant legislation, laws, regulations, standards, codes and Hydro Tasmania policies and procedures.

While at work you must take reasonable care of your own health and safety and the health and safety of other people, including people working under your supervision or direction who may be affected by your acts or omissions at the workplace in accordance with current Tasmanian Workplace Health and Safety Legislation.

## Role Accountabilities (feeds into KRAs in PDR process)

### People Accountabilities

- Ensuring personal effectiveness in role and developing for future roles, including:**
  - contributing to personal Performance Plan objectives;
  - monitoring progress against personal Performance Plan objectives;
  - undertaking appropriate professional development opportunities; and
  - contribute to team achievements through collaboration.

### Technical Accountabilities

- Participate in purpose-assembled teams engaged in the design of new or upgraded plant and equipment, including:**
  - design of transmission lines;
  - design of substations;
  - the liaison with site work and provision of site/design advice as necessary; and
  - the exercise of autonomy in applying technical knowledge and judgement.

**3. Provide professional engineering support for field and non field based activities, including:**

- Preparation of technical and functional specifications for structures and foundations associated with power generation and/or transmission equipment; and
- Ensuring that designs meet customer requirements and appropriate standards and performance criteria.

**4. Provide professional engineering judgement, advice and assistance on transmission line and substation design civil matters including:**

- Preparation of bids and feasibility studies for major projects;
- Prepare business cases based on technical expertise, reasoned argument, financial assessment and risk analysis; and
- When appointed as a project/job manager, to plan, program, set priorities, delegate functions, monitor and control progress of junior staff and where appropriate, act as their mentor.

**Scheduling Accountabilities**

**5. Prioritise and manage own workload, including:**

- Organise work and time allocation to always achieve / exceed Client expectations;
- Work in an organised methodical manner;
- Set and meets own work objectives; and
- The need to work under pressure to meet changes in programs and scope of work to satisfy the demands of clients.

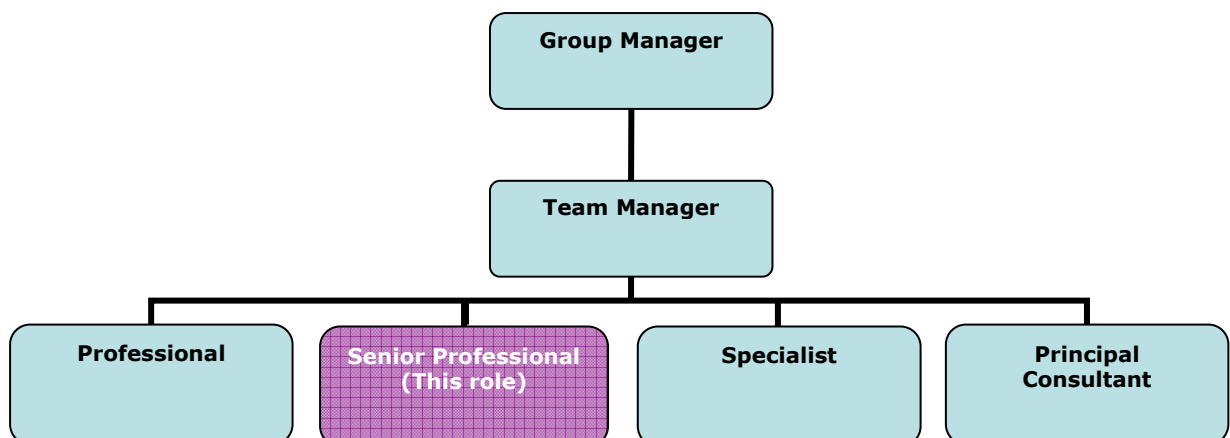
**Management Authorities (if appropriate)**

- VARI authorities in respect of direct reports, i.e.:
  - **Veto**, with reason, the selection of new team members;
  - **Assign** tasks to team members;
  - **Review** personal effectiveness and recommend any merit award; and
  - **Initiate** removal from own team.

**Delegations**

- Per Hydro Tasmania Delegations Manual for Level Of Work (LOW)

**Organisational Chart**



**Role relationships** - (critical to the effectiveness of the role, high impact on role)

<b>Internal</b>	<b>External</b>
<ul style="list-style-type: none"> <li>• Consulting Business Team Members</li> </ul>	<ul style="list-style-type: none"> <li>• Consulting Business Clients</li> </ul>
<ul style="list-style-type: none"> <li>• Managing Consultant</li> </ul>	<ul style="list-style-type: none"> <li>•</li> </ul>
<ul style="list-style-type: none"> <li>• Team Leader</li> </ul>	<ul style="list-style-type: none"> <li>•</li> </ul>
<ul style="list-style-type: none"> <li>• Energy Business Clients</li> </ul>	<ul style="list-style-type: none"> <li>•</li> </ul>

**Selection Criteria**

**Essential**

**Qualifications**

- Tertiary qualifications in Civil Engineering (or equivalent), acceptable for admission as a professional engineer to Engineers Australia, or equivalent professional body.

**Experience**

- At least seven 7 year’s experience in civil design work, with a particular emphasis on transmission line and substation structural design work;
- Previous experience involving design teams.

**Knowledge, skills and abilities**

- Strong knowledge of the following Australian Standards AS 4100, AS 3600, AS 3995 and ESAA C(b)1-2003;
- Sound experience in the use of computer design packages e.g. PLS Tower, PLS Pole;
- Development of conductor loads for transmission and substation structures;
- Experience in the development of conductor mounting point loads for Transmission and Substation structures;
- Experience in the analysis of lattice towers, pole and gantry structures;
- Experience in lattice tower, pole and substation foundation designs;
- Strong computer skills, particularly in the Microsoft suite of products;
- Strong written and verbal communication skills;
- Analyse the cause of problems in a logical manner;
- Able to adapt to and work effectively within a variety of changing situations;
- Has a keen regard for other team members and in achieving team cohesion and targets;
- Organises work and time allocation to always achieve/exceed expectations; and
- Ability to maintain confidentiality of all Hydro Tasmania and external client data and technical information.

**Desirable**

**Qualifications**

- Postgraduate qualifications in Civil, Structural or Geotechnical Engineering.

**Experience**

- Working Knowledge of PLS CADD;
- Foundation design experience;
- Estimating and quoting experience as applied in a consulting environment.

**Knowledge, skills and abilities**

- A general knowledge of project management and techniques for development planning and project analysis.