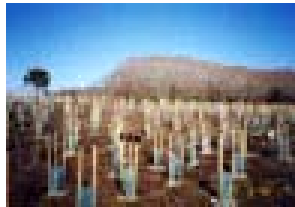


PROJECT DATA

Land Environment Program



CLIENT Hydro Tasmania

PROJECT LOCATION Tasmania

DATE OF PROJECT 2003-2006

SERVICES PROVIDED

- Environmental risk assessment
- Threatened species management
- Contaminated land assessment and management
- Environmental planning
- Stakeholder management
- Vegetation management and rehabilitation

The Land Environment Program (LEP) aims to improve land management practices on Hydro Tasmania land to ensure compliance with policy and legislative requirements, improve environmental awareness throughout the organisation and provide a series of recommendations for future work. Specific areas covered by the LEP are rehabilitation works, planning and monitoring, assessing contaminated sites, the Tasmanian Wilderness World Heritage Area Management Plan requirements, managing weeds and soil-borne diseases, managing threatened flora and fauna species, managing erosion and sediment control works, assessing community perceptions of lake aesthetics and developing tools and processes for database and system integration.

The LEP incorporates input from Hydro Tasmania Consulting's botanical, zoological and geomorphological specialists, GIS and database development experts and legal personnel. Each component is designed to integrate into a practical, scaleable management module to be incorporated into Hydro Tasmania's existing Environmental and Sustainability Management System.

The Land Environment Program will continue into the future with increased emphasis on on-ground results and reporting, developed around the framework of adaptive management and best-practice techniques and technologies and will be presented through integrated databases and GIS mapping platforms.



Head Office
4 Elizabeth Street
Hobart, Tasmania 7000
GPO Box 355, Hobart
Tasmania 7001, Australia
PHONE 1300 360 441
FAX +61 3 6230 5460
EMAIL
consulting@hydro.com.au
Hydro Tasmania is a business
of the Hydro-Electric Corporation
www.hydrotasmaniiconsulting.com.au