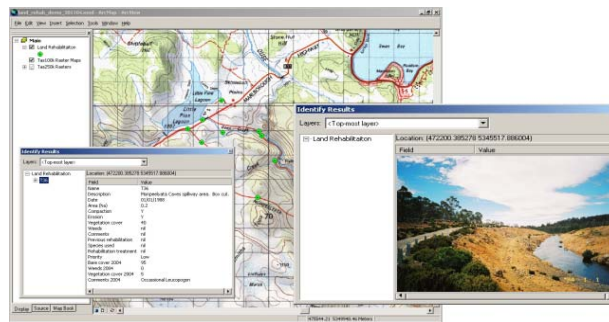


PROJECT DATA

Land Management Review



CLIENT	Hydro Tasmania
PROJECT LOCATION	Epping Forest, Tasmania
DATE OF PROJECT	2003
SERVICES PROVIDED	Environmental impact assessment, stakeholder consultation, and social research



The Land Management Program (LMP) aims to improve land management practices on Hydro Tasmania land to ensure compliance with policy and legislative requirements, improve environmental awareness throughout the organisation and provide a series of recommendations for future work.

Specific areas covered by the LMP are rehabilitation works planning and monitoring, assessing contaminated sites, the Tasmanian Wilderness World Heritage Area Management Plan requirements, managing weeds and soil-borne diseases, managing threatened flora and fauna species, managing erosion and sediment control works, assessing lake aesthetics and community perceptions, and developing tools and processes for database and system integration.

The LMP incorporates input from Hydro Tasmania Consulting's botanical, zoological and geomorphological specialists, GIS and database development experts and legal personnel. Each component is designed to integrate into a practical, scalable management module to be incorporated into Hydro Tasmania's existing Environmental and Sustainability Management System.

The Land Management Program will continue into the future with increased emphasis on on-ground results and reporting, developed around the framework of adaptive management and best-practice techniques and technologies and will be presented through integrated databases and GIS mapping platform.

